

Applications

- Construction equipment
- Agricultural equipment
- Engine mounting
- Commercial lawn care equipment
- Power generators

Load Range

- 2061 = load ratings to 300 lbs.
- 2062 = load ratings to 630 lbs.
- 2063 = load ratings to 1330 lbs.
- 2064 = load ratings to 2100 lbs.
- 2065 = load ratings to 4560 lbs.

Attributes

- Chamfering of mounting plate is not required
- Bonded metal inserts allow the mount to be used on cut holes in the mounting surface
- Dimensions and load ratings are the same as Ring and Bushing Series 1761-1765
- Ribs hold part in place during installation
- Identical top and bottom halves - no orientation mistakes, less part numbers
- Axial to radial stiffness 4:1
- Fail-safe design with snubbing washer

Specifications

- Natural Frequency - 10-20 Hertz
- Transmissibility at resonance - 10:1
- Resilient Element - Neoprene or Natural Rubber
- Standard materials - Cold-rolled steel
- Weight - See dimensional drawings

Elastomeric Data

- Neoprene elastomer has an operating temperature range of -40°F to +200°F (-40°C to +93°C) and is resistant to most oils, solvents and ozone
- Natural Rubber has an operating temperature range of -25°F to 160°F (-37°C to +70°C)
- Additional elastomers are available upon request.

Specifications subject to change without notice. Check with factory for latest revisions. The Federal Trade Commission considers no existing test methods or standards regarding flammability as accurate indicators of the performance of cellular plastic materials under actual fire conditions. Results of existing test methods, such as UL-94, MVSS-302, SAE J-369, and FAR 25.853 are intended only as measurements of the performance of such materials under specific controlled test conditions. Any flammability ratings shown are not intended to reflect hazards presented by these materials under actual fire conditions. The information contained herein is based on laboratory test data developed for PTI and is believed to be reliable, but its accuracy or completeness is not guaranteed. The buyer must test any product to determine the suitability for his specific application before use. PTI DISCLAIMS ANY RESPONSIBILITY FOR: 1) WARRANTIES OF FITNESS AND PURPOSE, 2) VERBAL RECOMMENDATIONS, 3) CONSEQUENTIAL DAMAGES FROM USE AND 4) VIOLATION OF ANY PATENTS OF TRADEMARKS HELD BY OTHERS.



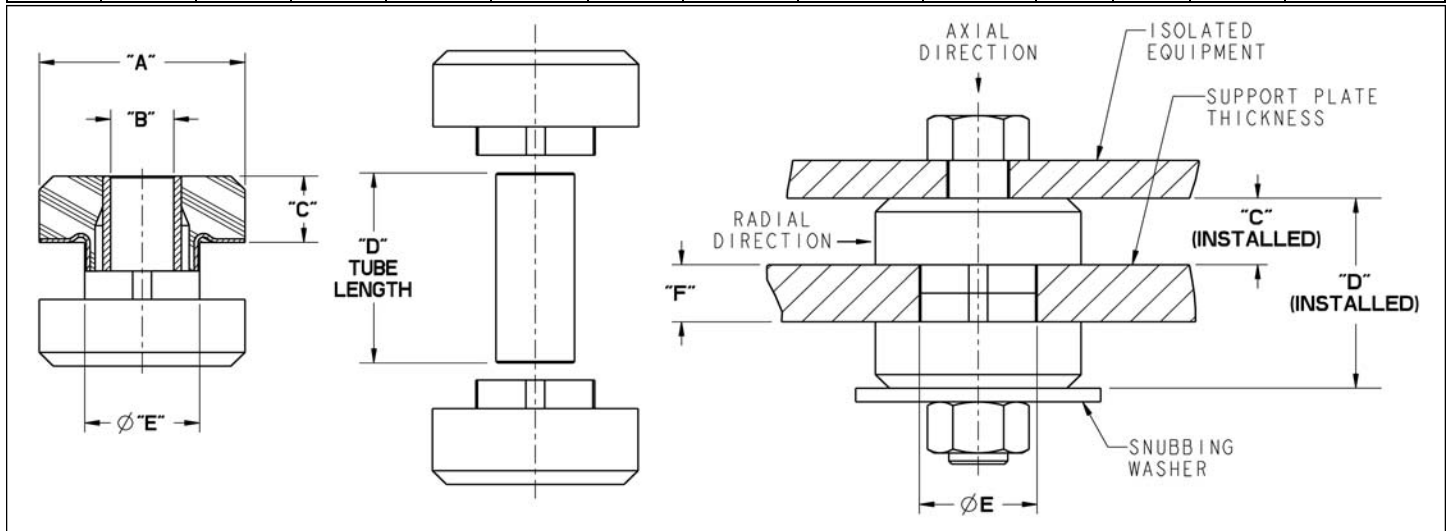
Part #	Ø A Inch (metric)	Ø B Inch (metric)	C Inch (metric)	C Installed Inch (metric)	D Inch (metric)	Ø E Inch (metric)	Weight lbs./oz. (grams)	Axial Load Ratings (max. lbs.) /kg.	Plate Thickness (in.) "F" (metric)	Bolt Size	Grade	Max Torque (ft.-lbs.)	Elastomer Material											
2061-1	1.31 (33.3)	.397 (10.1)	0.50 (12.7)	0.44 (11.2)	1.25 (31.8)	.730 (18.5)	1.5 oz (43)	40/18	.375" (9.52)	3/8"	5	30	Natural Rubber											
2061-2								90/41					Natural Rubber											
2061-3								140/64					Natural Rubber											
2061-4								250/113					Natural Rubber											
2061-5								300/136					Natural Rubber											
2061-11								40/18					Neoprene											
2061-12								90/41					Neoprene											
2061-13								140/64					Neoprene											
2061-14								250/113					Neoprene											
2061-15								300/136					Neoprene											
2062-1								1.88 (47.8)					.532 (13.5)	0.78 (19.8)	0.69 (17.5)	1.94 (49.3)	1.23 (31.2)	5.0 oz (142)	130/59	.563" (14.3)	1/2"	8	120	Natural Rubber
2062-2																			175/79					Natural Rubber
2062-3																			240/109					Natural Rubber
2062-4																			380/172					Natural Rubber
2062-5																			630/286					Natural Rubber
2062-11	130/59	Neoprene																						
2062-12	175/79	Neoprene																						
2062-13	240/109	Neoprene																						
2062-14	380/172	Neoprene																						
2062-15	630/286	Neoprene																						
2063-1	2.55 (64.8)	.657 (16.7)	0.90 (22.9)	0.78 (19.8)	2.43 (61.7)	1.48 (37.6)	11.0 oz (312)		210/95	.875" (22.2)	5/8"	8							220					Natural Rubber
2063-2									350/159															Natural Rubber
2063-3									490/222															Natural Rubber
2063-4									775/350															Natural Rubber
2063-5									1100/500															Natural Rubber
2063-11								210/95	Neoprene															
2063-12								350/159	Neoprene															
2063-13								490/222	Neoprene															
2063-14								775/350	Neoprene															
2063-15								1100/500	Neoprene															

Chart continued on next page....

Specifications subject to change without notice. Check with factory for latest revisions. The Federal Trade Commission considers no existing test methods or standards regarding flammability as accurate indicators of the performance of cellular plastic materials under actual fire conditions. Results of existing test methods, such as UL-94, MVSS-302, SAE J-369, and FAR 25.853 are intended only as measurements of the performance of such materials under specific controlled test conditions. Any flammability ratings shown are not intended to reflect hazards presented by these materials under actual fire conditions. The information contained herein is based on laboratory test data developed for PTI and is believed to be reliable, but its accuracy or completeness is not guaranteed. The buyer must test any product to determine the suitability for his specific application before use. PTI DISCLAIMS ANY RESPONSIBILITY FOR: 1) WARRANTIES OF FITNESS AND PURPOSE, 2) VERBAL RECOMMENDATIONS, 3) CONSEQUENTIAL DAMAGES FROM USE AND 4) VIOLATION OF ANY PATENTS OF TRADEMARKS HELD BY OTHERS.



Part #	Ø A Inch (metric)	Ø B Inch (metric)	C Inch (metric)	C Installed Inch (metric)	D Inch (metric)	Ø E Inch (metric)	Weight lbs./oz. (grams)	Axial Load Ratings (max. lbs.) /kg.	Plate Thickness (in.) "F" (metric)	Bolt Size	Grade	Max Torque (ft.-lbs.)	Elastomer Material											
2064-1	3.50 (89.0)	.938 (23.8)	1.00 (25.4)	0.88 (22.4)	2.88 (73.2)	2.23 (56.0)	1 lb 7.5 oz (667)	270/122	1 1/8"	7/8"	8	600	Natural Rubber											
2064-2								510/231					Natural Rubber											
2064-3								770/349					Natural Rubber											
2064-4								1170/530					Natural Rubber											
2064-5								2100/952					Natural Rubber											
2064-11								270/122					Neoprene											
2064-12								510/231					Neoprene											
2064-13								770/349					Neoprene											
2064-14								1170/530					Neoprene											
2064-15								2100/952					Neoprene											
2065-1								4.88 (124)					1.063 (27)	1.25 (31.8)	1.07 (27.2)	3.38 (85.0)	2.47 (62.7)	2 lb 14 oz (1305)	1140/517	1 1/4"	1.000"	8	900	Natural Rubber
2065-2																			1930/875					Natural Rubber
2065-3																			2580/1170					Natural Rubber
2065-4																			3540/1605					Natural Rubber
2065-5																			4560/2068					Natural Rubber
2065-11	1140/517	Neoprene																						
2065-12	1930/875	Neoprene																						
2065-13	2580/1170	Neoprene																						
2065-14	3540/1605	Neoprene																						
2065-15	4560/2068	Neoprene																						



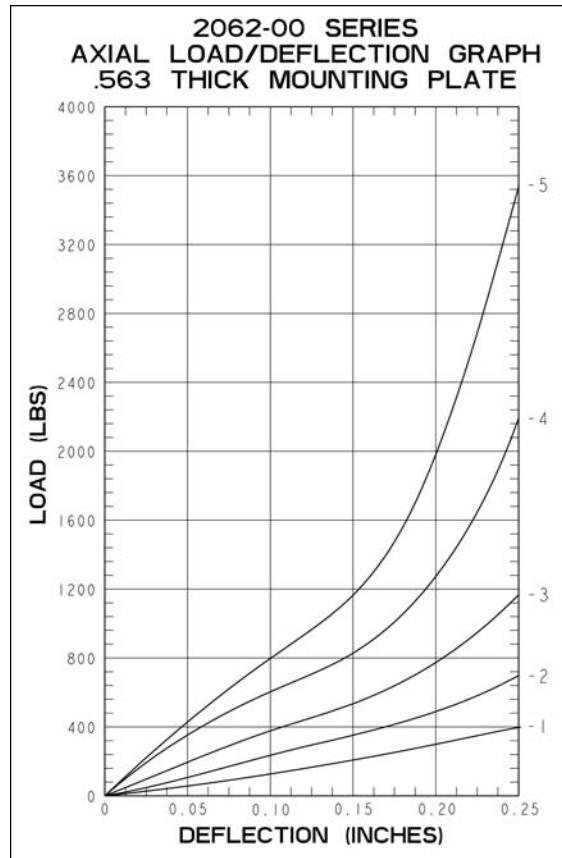
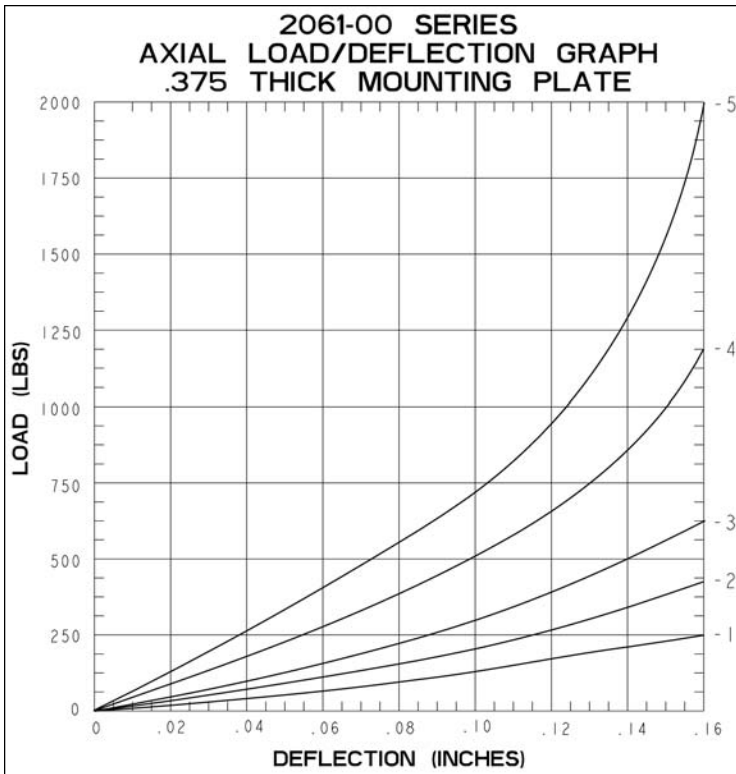
Specifications subject to change without notice. Check with factory for latest revisions. The Federal Trade Commission considers no existing test methods or standards regarding flammability as accurate indicators of the performance of cellular plastic materials under actual fire conditions. Results of existing test methods, such as UL-94, MVSS-302, SAE J-369, and FAR 25.853 are intended only as measurements of the performance of such materials under specific controlled test conditions. Any flammability ratings shown are not intended to reflect hazards presented by these materials under actual fire conditions. The information contained herein is based on laboratory test data developed for PTI and is believed to be reliable, but its accuracy or completeness is not guaranteed. The buyer must test any product to determine the suitability for his specific application before use. PTI DISCLAIMS ANY RESPONSIBILITY FOR: 1) WARRANTIES OF FITNESS AND PURPOSE, 2) VERBAL RECOMMENDATIONS, 3) CONSEQUENTIAL DAMAGES FROM USE AND 4) VIOLATION OF ANY PATENTS OR TRADEMARKS HELD BY OTHERS.



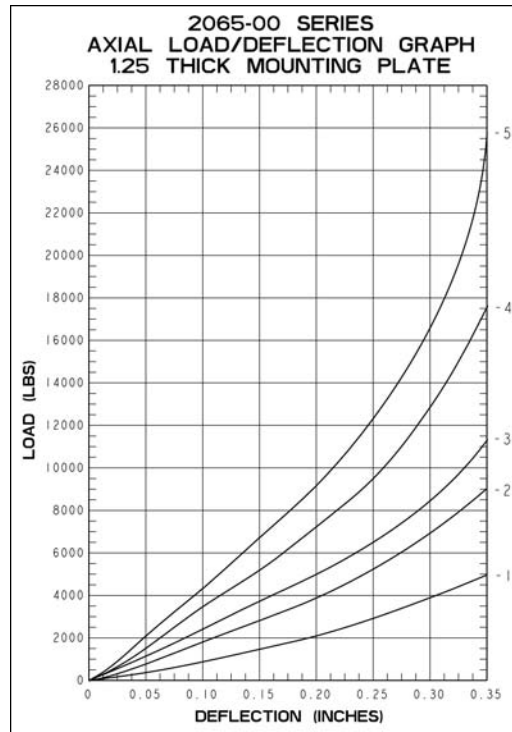
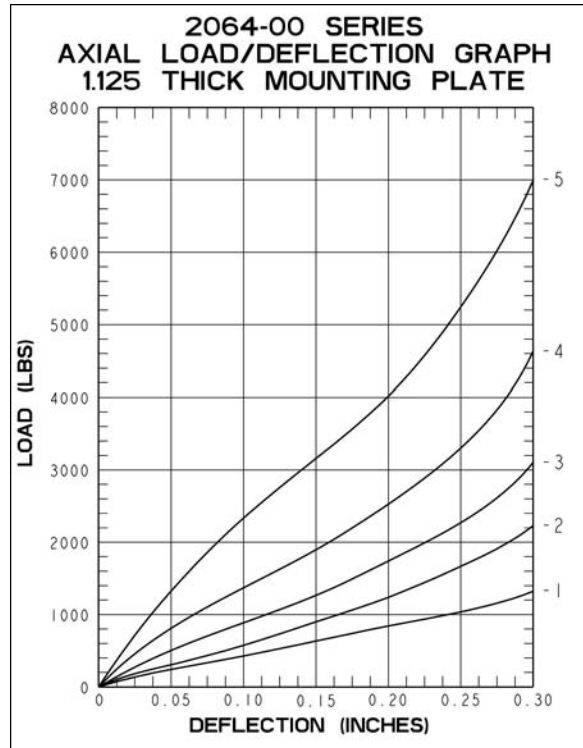
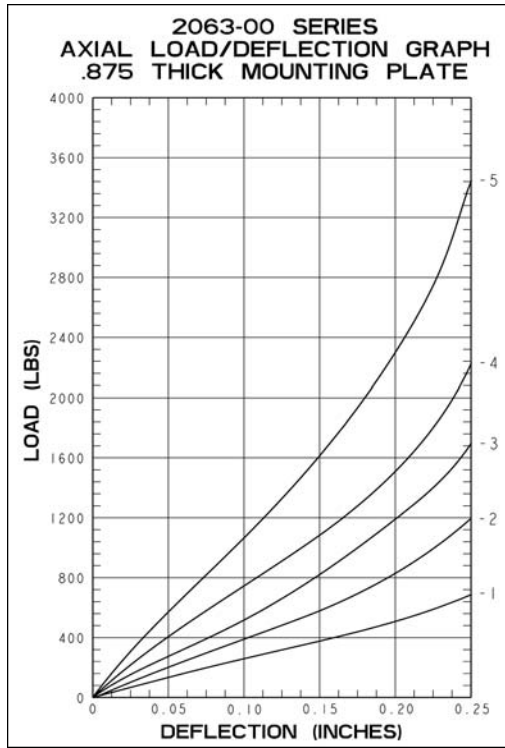
***The use of a snubbing washer is required to ensure proper static and dynamic loading of the isolator and retention of suspended equipment under severe shock environments.**

Snubbing washers are ordered by separate part numbers as shown in the table below.

Part #	O.D	I.D	Thickness	Snubbing Washer Part #
2061	1.56	.391	.090	SW-1560-0391-0090-SZ
2062	2.13	.532	.134	SW-2130-0532-0134-SZ
2063	2.81	.657	.188	SW-2810-0657-0188-SZ
2064	3.88	.938	.250	SW-3880-0938-0250-SZ
2065	5.25	1.063	.375	SW-5250-1063-0375-SZ



Specifications subject to change without notice. Check with factory for latest revisions. The Federal Trade Commission considers no existing test methods or standards regarding flammability as accurate indicators of the performance of cellular plastic materials under actual fire conditions. Results of existing test methods, such as UL-94, MVSS-302, SAE J-369, and FAR 25.853 are intended only as measurements of the performance of such materials under specific controlled test conditions. Any flammability ratings shown are not intended to reflect hazards presented by these materials under actual fire conditions. The information contained herein is based on laboratory test data developed for PTI and is believed to be reliable, but its accuracy or completeness is not guaranteed. The buyer must test any product to determine the suitability for his specific application before use. PTI DISCLAIMS ANY RESPONSIBILITY FOR: 1) WARRANTIES OF FITNESS AND PURPOSE, 2) VERBAL RECOMMENDATIONS, 3) CONSEQUENTIAL DAMAGES FROM USE AND 4) VIOLATION OF ANY PATENTS OR TRADEMARKS HELD BY OTHERS.



Specifications subject to change without notice. Check with factory for latest revisions. The Federal Trade Commission considers no existing test methods or standards regarding flammability as accurate indicators of the performance of cellular plastic materials under actual fire conditions. Results of existing test methods, such as UL-94, MVSS-302, SAE J-369, and FAR 25.853 are intended only as measurements of the performance of such materials under specific controlled test conditions. Any flammability ratings shown are not intended to reflect hazards presented by these materials under actual fire conditions. The information contained herein is based on laboratory test data developed for PTI and is believed to be reliable, but its accuracy or completeness is not guaranteed. The buyer must test any product to determine the suitability for his specific application before use. PTI DISCLAIMS ANY RESPONSIBILITY FOR: 1) WARRANTIES OF FITNESS AND PURPOSE, 2) VERBAL RECOMMENDATIONS, 3) CONSEQUENTIAL DAMAGES FROM USE AND 4) VIOLATION OF ANY PATENTS OR TRADEMARKS HELD BY OTHERS.