



1766 Series All-Attitude Isolators

A compact, mid range frequency , general purpose all-attitude isolator for equipment for aircraft, shipboard and vehicular applications.

Features

- Fail Safe design, All-Attitude isolator.
- Axial to Radial Stiffness ratio 1:1.
- Compact, low profile design.
- Easy to install.
- High Damped Silicone.
- Isolates equipment under 5G's sustained loading.

Load Range

- 4 load ratings available up to 5 Lbs.
- Can be custom tailored to specific applications.

Environmental Shock and Vibe

- Provides excellent vibration attenuation at frequencies above 40 hertz .
- Survives a 30g, 11 millisecond half-sine crash shock pulse.

Applications

- Military electronics (shipboard, vehicle)
- Electronics for rotary wing and propeller driven aircraft.
- Avionics & electronics
- Racking and tray systems.



The 1766 mount is a mid frequency range all-attitude general purpose isolator for isolating sensitive electronics equipment for shipboard, aircraft and vehicular applications. These isolators are ideal for mounting to racks or trays systems that need a fail safe, high frequency vibration and low transmissibility at resonance isolator.

Part #	Maximum Load (lbs.)		Axial Natural Frequency (HZ)	Standard Material	Standard Elastomer	Transmissibility at Resonance
	Axial Compression	Radial				
1766-1	1	1	24	Steel & Aluminum	Hi-Damp Silicone	4:1
1766-2	2	2	22	Steel & Aluminum	Hi-Damp Silicone	4:1
1766-3	3	3	23	Steel & Aluminum	Hi-Damp Silicone	4:1
1766-5	5	5	22	Steel & Aluminum	Hi-Damp Silicone	4:1

Environmental data

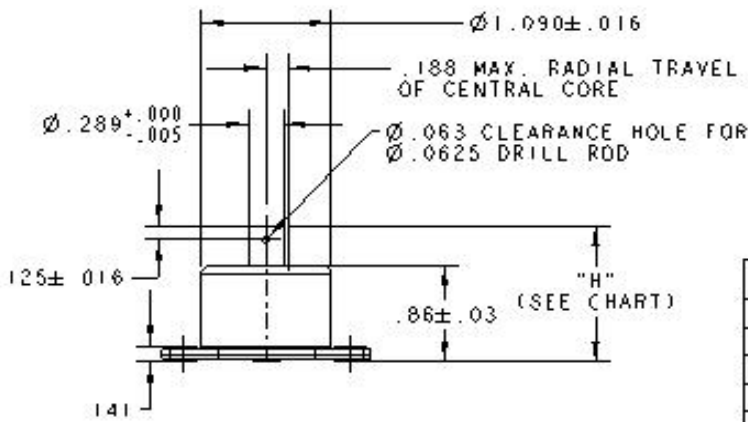
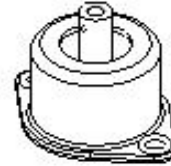
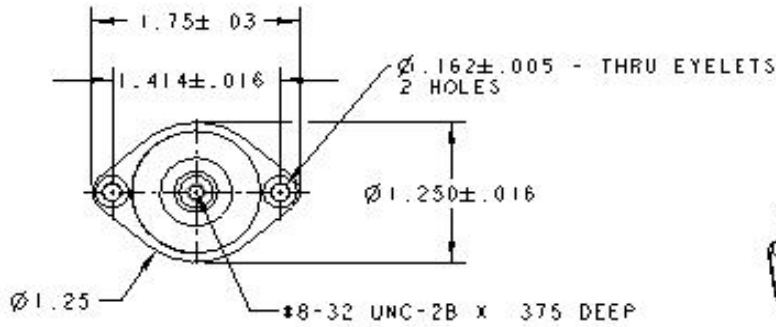
Hi-Damp Silicone operating temperature range is -67°F to +300°F (-55°C to +150°C)
 Passes Mil-E-5400 requirement for ozone, humidity, salt spray and fungus
 Passes Mil-S-901 lightweight Grade B high impact shock test.

Engineered Plastics Solutions Group, Inc
 22 Thompson Road
 Norwood, MA 02062

Phone: (781)-762-3913
Fax: (781)-762-5101
Email: info@epsginc.com

1766 Mount

Dimensions & Load Deflection Curves



1766 "H" DIMENSION	
COMPRESSED	9.1
APPROX. FREE	1.22
MAX. EXTENDED	1.56

1766 LOAD RANGE DATA	
PART No.	MAX. LOAD/ISOLATOR
1766-1	1 LBS
1766-2	2 LBS
1766-3	3 LBS
1766-5	5 LBS

Axial Load Deflection Curve for 1766

